



HPCA Office: 267-331-8002

4TH GRADE



shinl@hpcaphilly.org



text/call use REMIND app



Teacher:

Mrs. Lin



- ZOOM: zoom4@hpcaphilly.org
- Teacher since 2000 (SUNY Buffalo BA, Westminster Seminary MAR)
- Pastor's wife at One Hope Church
- 3 kids (HPCA Class of '21, '24, and '25)



Class Schedule

- Everyday use HW LOG, parents sign HW & Reading Log
- Mondays (Lun.) Spelling Test and Spelling HW due
- Fridays (Vier.) Test/Quiz day. (Review Thurs.)
- Lunch 11:00am (in good weather, walk to Hunting Park)



Bring Everyday

- Healthy Breakfast/Snack
- Homework (HW Tarea)
- Reading books, LOG, & bag

Grading Policy

- Class Work 30%
- Home Work & Reading Log 10%
- Tests & Quiz 30%
- Projects/Writing 20%
- Behavior & Effort 10%

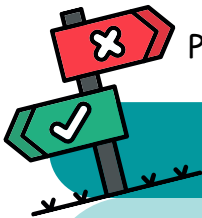


Attendance

- Late Tardy at 8:31
- Send a Medical Note for Absence

Student Login: _____

Password: _____



Behavior/Work Ethic



Expectation: I give my best so you give yours! 100% Respect & Effort.

When directions are not followed, even after a verbal warning:

- 2nd Warning, move from seat; Write in Q/A Journal to reset solutions
- 3rd Warning, Call home; write in Q/A Journal to record solutions
- Office Visit for official discipline with Dean or Principal for solutions/next steps



4TH GR. SUPPLY LIST

Bring to School

- Uniform- (see hpcaphilly.org)
 - burgundy HPCA LOGO polo
 - gray slacks/skirts to knees
 - all black shoes/sneakers
- Healthy Breakfast/Snacks
- Reusable Water bottle
- 2 Boxes of Tissue
- 2 Rolls of Paper Towel
- 1 pack of Sanitizing Wipes
- Backpack

Bring \$10 to school for set of supplies below to be provided by Mrs. Lin which includes:

- one Composition notebook
- one 5-subject Spiral notebook (wide-rule)
- one Expandable Folder (5 or 7 pocket)
- one HW Plastic Folder (2-pocket)
- plastic sheet protector (for HW Log)
- Pencils
- Pens (blue only)
- Highlighter
- Scissors
- Glue Stick
- Markers
- Looseleaf Filler paper (wide-rule)
- Index Cards

****OR you can get the supplies on your own of course!**

Do NOT bring:

- No Handheld Pencil Sharpeners
- No permanent markers
- No Soda
- No Gum

Trae a la Clase

- Uniforme- (hpcaphilly.org)
 - camisa burdeos con LOGO
 - pantalones/falda gris
 - zapatos negros
- Desayuna/Merienda Saludable
- Botella para poner agua
- 2 cajas de tejido (tisú)
- 2 rollos de papel toalla
- 1 paquete de toallitas desinfectantes
- Mochila

Trae \$10 a la clase para recibir los útiles escolares que incluirá:

- 1 cuaderno de composición
- 1 cuaderno de espiral (5 temas)
- 1 folder expandible (de 5 bolsillos)
- 1 folder de plástico (de 2 bolsillos)
- 1 Protector de lámina de plástico (lista de tarea)
- Lápices
- Bolígrafos/(Plumas) (azul)
- Highlighter
- Tijeras
- Pegamento
- Papel (wide-rule)
- Index Cards

****O si quisiera que compre las suyas propias para traer, por supuesto.**

NO PERMITE A TRAER:

- sacapuntas de lápiz de mano
- marcadores permanentes
- soda
- chicle